



REGIONE AUTONOMA  
FRIULI VENEZIA GIULIA



PIANO DI GESTIONE  
DELLE AREE DELLA RETE NATURA 2000

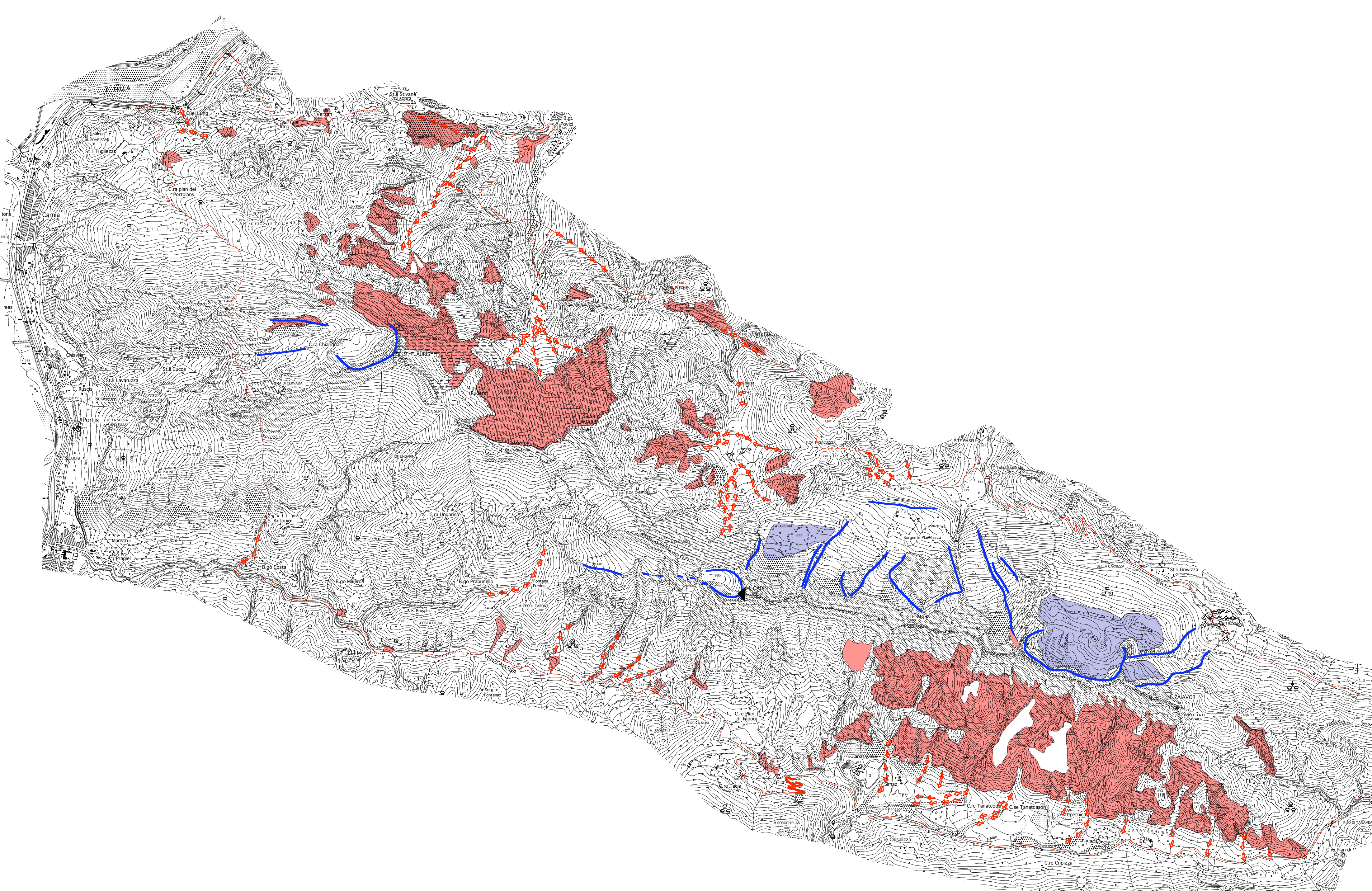
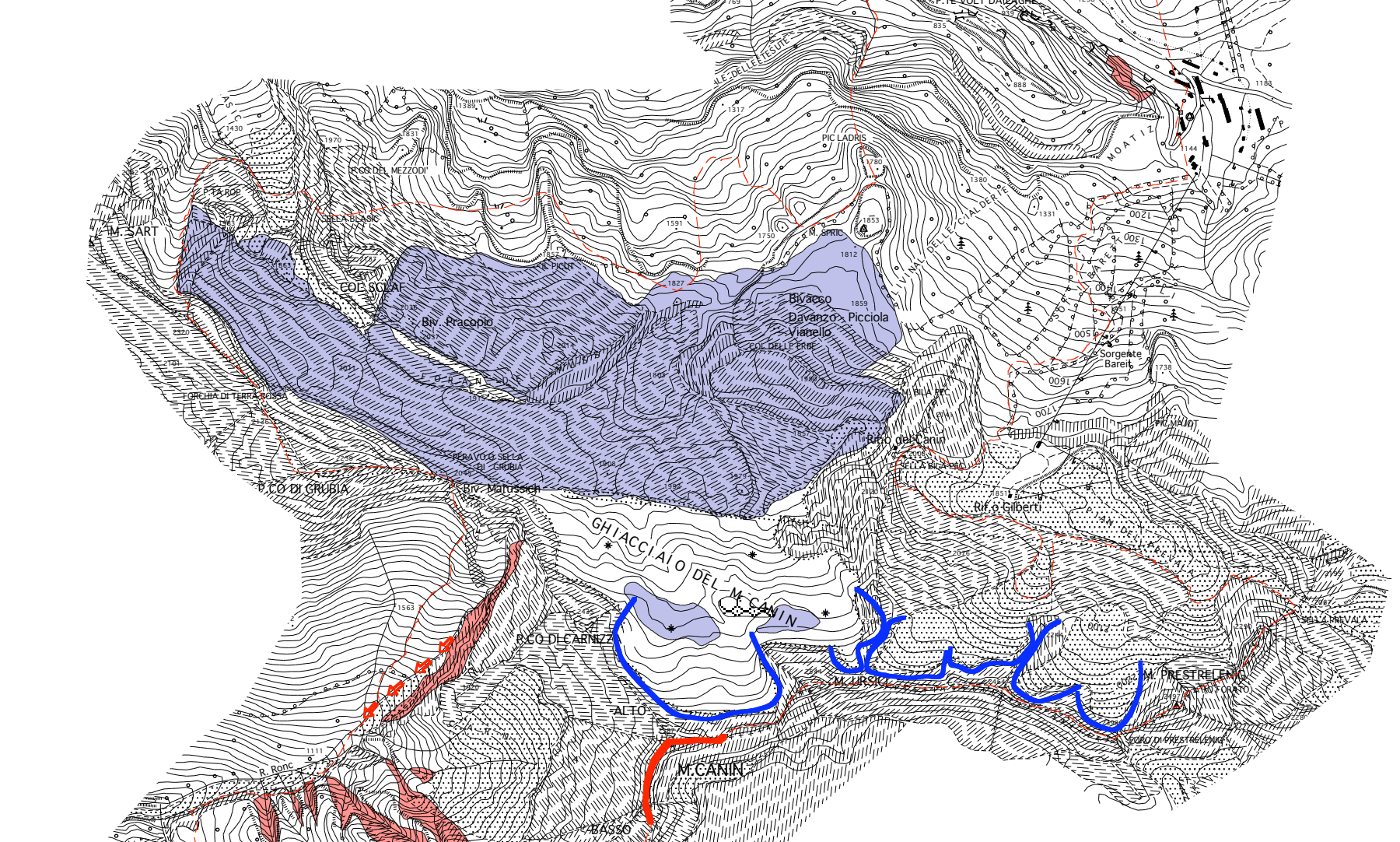
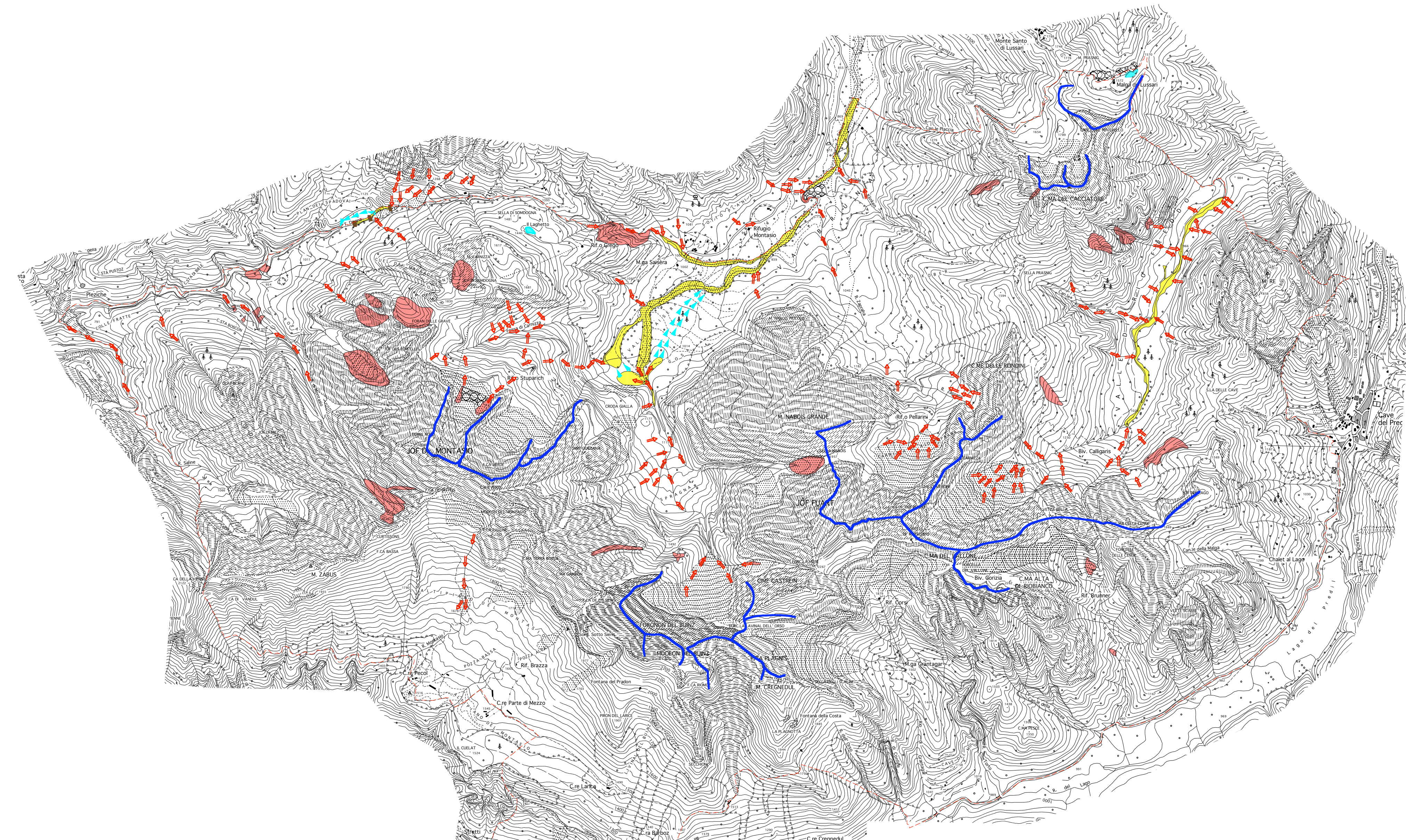
ZPS IT3321002 Alpi Giulie - SIC IT3320012 Prealpi Giulie  
Settentrionali - SIC IT3320010 Jôf di Montasio e Jôf Fuart



Tav. 6

Scala 1:30.000

**ALLEGATO 6**  
**CARTA GEOMORFOLOGICA**



- LEGENDA
- area instabile o in forte erosione
  - traccia di colate detritiche intense
  - area intensamente carsificata
  - vallo morenico frontale
  - circo glaciale
  - valle glaciale
  - lago